

# EDGES PEOPLE CAN GO FOR : NATURAL & COMPOSITE STONE



A

10mm Pencil Round Top only



Ar

5 mm Pencil Round Top only



B

Half Bullnose



D

Shamfer 20 x 15 Pencil Round Bottom



E

Shamfer 20 x 15



F

Lamb tung

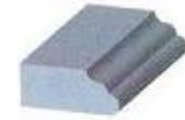


FB

Victorian With full Bullnose



FZ



FV

Lamb tung with full Bullnose



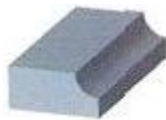
H

Victorian edge



I

Victorian Top & Bottom



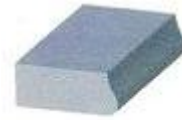
L

Crown edge



LV

Crown edge & 20 mm full bullnose



M

40 mm Wave Edge



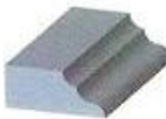
O

Crown edge & 20 mm half bullnose



OG

OG Shape



Q

Crown edge & lamb tung



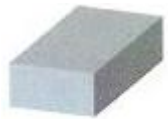
T

Pencil Round Top & Bottom



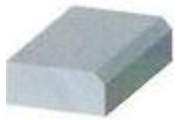
V

Full Bullnose



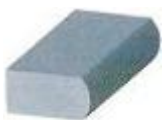
Z

Flat Polish



Z5

10mm Flat Polish



1

Crown Wage



2

Half Bullnose with Half Bullnose



3

Tripple Half Bullnose



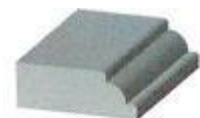
4

5mm Flat Polish



5S

Victorian on top + half bullnose on bottom



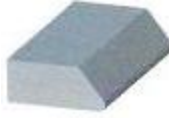
AK46

10 mm Pencil Round + half Fullnose + 15 mm Pencil Round



KA01

10 mm Half Bullnose + 10 mm Half Bullnose + Pencil Round



KC02

5 mm Pencil top & 5 mm Level on Bottom



KC04